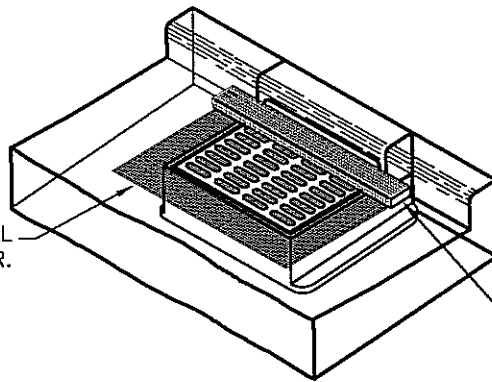


GEOTEXTILE FABRIC SHALL CONSIST OF:
 PROPEX 1198 OR GEOTEX 914SC (OR
 APPROVED EQUAL) WOVEN FABRIC.

NOTE: INLET PROTECTION DEVICE SHALL BE IN
 PLACE ONCE CURB AND GUTTER IS COM-
 PLETED AND SHALL REMAIN IN PLACE UNTIL
 PERMANENT EROSION CONTROL IS ESTABLISHED.
 STREETS USED AS HAUL ROADS MAY ALSO
 REQUIRE INLET PROTECTION.



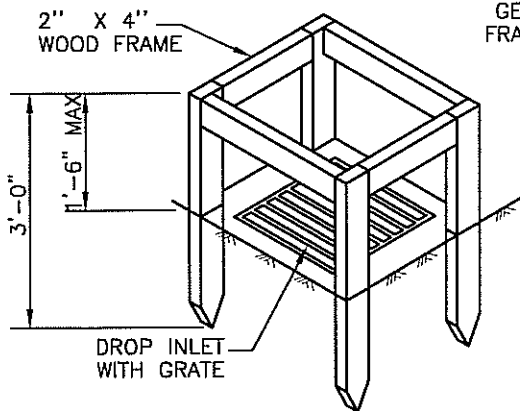
GEOTEXTILE SIZE SHALL BE
 8" MIN. GREATER ON ALL
 SIDES OF THE INLET COVER.
 PLACE GEOTEXTILE UNDER
 INLET COVER.

WOOD 2"x4" EXTENDED
 8" BEYOND GRATE WIDTH
 ON BOTH SIDES. AN ADDITIONAL 18"
 OF GEOTEXTILE IS WRAPPED AROUND
 THE WOOD 2"x4" AND STAPLED.

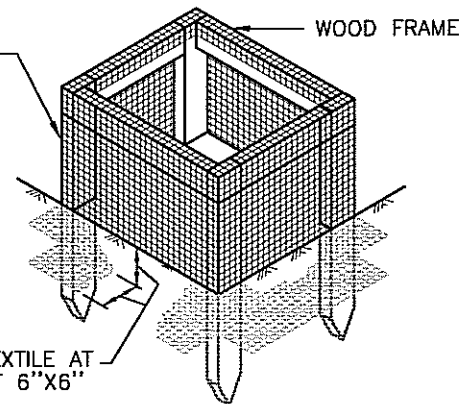
NOTE: INSTALL EROSION CONTROL DEVICE UPON COMPLETION OF STRUCTURE.

GEOTEXTILE FILTER AT CURB INLETS

GEOTEXTILE FABRIC SHALL CONSIST
 OF: PROPEX 1198 OR GEOTEX
 914SC (OR APPROVED EQUAL)
 WOVEN FABRIC.



WRAP WOOD FRAME WITH
 GEOTEXTILE AND STAPLE TO
 FRAME. GATHER EXCESS AT
 CORNERS.



BURY GEOTEXTILE AT
 A DEPTH OF 6"x6"

SILT FENCE BOX TO PROTECT STORMWATER INLETS

P:\STDDWGS\EROSION CONTROL.dwg



DATE:
 3/14/05
 PROJECT:

EROSION CONTROL
 CURB INLETS

CITY ENGINEER
 ALLEN GRASSER
 SCALE:
 NONE

DRAWN BY:
 MK
 SPEC:
 ?????