

There may be a time when an emergency takes place in your community due to an airborne chemical release. The outside air quality may be affected to the point that it isn't safe to be outside or to evacuate. In a case like this it is usually safer to shelter-in-place until wind disperses and moves the chemical away.

NOTIFICATION

If there is an emergency that is a risk to the public, your local officials will notify you by radio, TV, or telephone. The sirens may be activated. If you hear the sirens, immediately go inside and tune to a local TV or radio station.

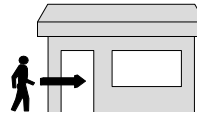
If you are told there has been a dangerous chemical release, most often there is not enough time for evacuation. The safest immediate action is to shelter-in-place while listening for further instructions.

There may be times when there has been no notice but you still need to take action. Take immediate action if you:

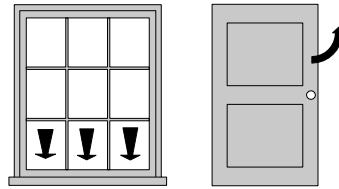
- ◆ Hear a strange sound like an explosion.
- ◆ See a vapor cloud.
- ◆ Smell a strange odor.
- ◆ Feel nauseous or have burning eyes.

SHELTER-IN-PLACE MEANS:

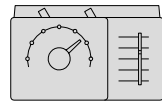
1. **Move inside a building**



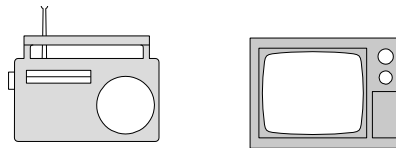
2. **Close all windows and doors**



3. **Turn off all ventilation systems (Includes heating and AC)**



4. **Listen to your local radio or TV**



SPECIFIC INSTRUCTIONS

Go inside the nearest structure such as a home, school, store, or public building. If your children are at school or daycare, do not attempt to get them. The staff has been trained for these emergencies. Bring pets inside if practical. If indoors already, stay there. Do not go outside to investigate.

In a structure:

Shut all windows, doors, chimney or fire place vents. This includes everything that can quickly and easily be closed to prevent the chemical from entering.

Turn off forced air heating or cooling systems. Turn off exhaust fans.

Go into a room, preferably one with no or few windows. Higher floors are better. Do not use the basement. If possible, seal all doors, windows, vents, etc. with plastic and tape. Use damp towels under doors.

Continue to listen to the radio or TV on a local news station. You may be given instructions to evacuate. You will be notified when the emergency is over. (Use a battery-powered radio if the power is off.)

When you are told the area is safe, you will need to leave your place of shelter and ventilate. Open all the doors and windows and air out the building in case a small amount of the chemical has seeped in.

If in a vehicle:

Close all windows and shut all manual vents. Turn off the ventilation system. Turn on the radio for emergency information.

SHELTER IN PLACE PRE-PLANNING

It is important that you have a plan for your home or business for sheltering-in-place. Some key steps in this plan are:

- Know what doors and windows are likely to be open and assign some one to check and close them.
- Know where the manual vents are and how to close them.
- Know where forced air heating or cooling controls/power exhaust vents are and how to turn them off.
- Know what room you will go to and how to seal it.
- Have a radio. One that is battery operated in the room you've identified.
- Know your local news station(s).

Shelter-In-Place Kit

You should gather these items together in a box and have ready for any emergency:

- Plastic for windows
- Duct tape
- Towel for under door
- Drinking water in jugs
- Radio and batteries
- Flashlight & batteries

Check list Shelter-In-Place

- **Go indoors.**
- **Close windows and doors.**
- **Turn off ventilation systems.**
- **Go to an inside room.**
- **Turn on radio for more info.**

Do you own a NOAA Weather Radio?

Besides severe weather information, hazardous material spill information can be heard 24 hours a day on a weather radio.

**For further information contact
your local fire department or
contact:**

**The Grand Forks County Emergency
Management Office
122 South 5th Street
Office 21
Grand Forks ND 58201**

Phone: 701-780-8213
Fax: 701-746-2536

Shelter In Place

**EMERGENCY
INSTRUCTIONS FROM**

**YOUR
LOCAL EMERGENCY
RESPONDERS**

