



City of Grand Forks
Staff Report
Committee of the Whole – August 12, 2019
City Council – August 19, 2019

Agenda Item: Assessment district project #7768.1 Stormwater Pond-Crary's Sixth Resubdivision, District #541.1 for newly annexed property in the future assessment district. The property is in Crary's Seventh Addition, Crary's Eighth Resubdivision and Unplatted parts in GF Township.

Submitted by: Maureen Storstad, Director of Finance & Administrative Services

Staff Recommended Action: Include newly annexed property within the special assessment district #541.1 and authorize subsequent assessment for Stormwater Pond for Crary's Sixth Resubdivision to newly annexed property.

August 12, 2019 – Committee Recommended Action:

August 19, 2019 – Council Action:

BACKGROUND: In 2018, the Stormwater Pond for Crary's Sixth Resubdivision was completed and assessed to properties in district #541. This project was deferred until 2021. This project also benefited a future special assessment district, which we are now proposing to assess as district #541.1. The newly annexed area is in Crary's Seventh Addition, Crary's Eighth Resubdivision and Unplatted parts in GF Township.

ANALYSIS AND FINDINGS OF FACT:

- The Special Assessment Commissioners found that all properties within the district area and a future assessment area would benefit from the stormwater pond project and, therefore, should all be assessed.
- Staff is assessing newly annexed property on a timely basis.
- The dollar amount of this assessment to the newly annexed property is \$156,766.71. This amount includes one year of accrued interest.
- Property on the listing will be fully assessed for this project. This project will be deferred until 2021.

SUPPORT MATERIALS:

- Engineer's Report showing timeline and special assessment district map.
- Spreadsheet calculating benefit to new properties.

ENGINEER'S REPORT

District No. 541.1 (Project No. 7768.1)

The following report is submitted to the City Council of Grand Forks regarding the proposed Project No. 7768.1 benefiting

District No. 541.1

1. Purpose and general nature:

Improvement of the municipal system serving the district by:

- New Stormwater pond and outfall piping
- Expansion of an existing Stormwater pond

2. Location:

Described as follows:

- Pond 1 at Lot 20, Block 1, Crary's Sixth Resubdivision
- Pond 1 at Lot 7, Block 2, Crary's Third Resubdivision

3. Feasibility and cost:

In the opinion of the undersigned, the improvement is feasible and the probable cost thereof is estimated to be approximately \$156,766.71.

4. A map of the district is attached.

Date

Allen R. Grasser, PE – City Engineer

Future Area Assessments	Dollar Amount	Square Footage
Total Assessed	\$370,414.94	4,411,133
Less District #541.1 Share	\$156,766.71	2,401,068
Remaining Future Area Share	\$213,648.23	2,010,065

TIMETABLE FOR SPECIAL ASSESSMENT PROJECTS

Project Name Stormwater Ponds for Crary's Additions
 Project Number 7768.1

District No. 541.1

- Water
- Sewer
- Water & Sewer
- Sidewalk
- Other _____

This timetable prepared by Finance
 Revised by _____

Date 8/6/2019

Action

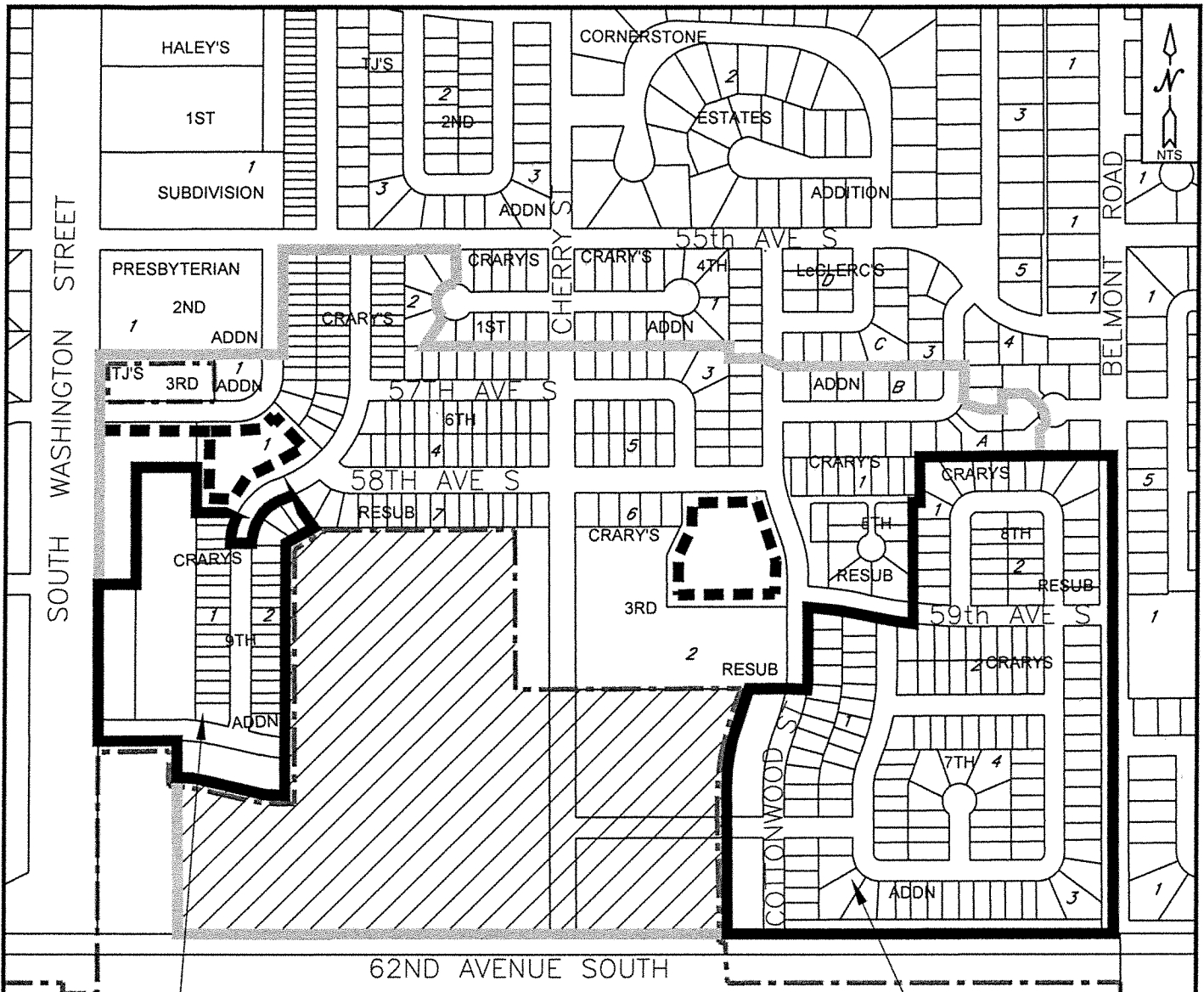
Date of Action

Action	Date of Action			Approved
	Other	Committee	Council	
Approval of Engineers Report including estimate. Resolution creating assessment district. Direct engineering to prepare plans & specifications, and advertise for construction bids.		8/12/19	8/19/19	
*Notices sent to property owners.	Week of 8/12/19			
*Special Assessment Commission to meet to determine preliminary distribution of benefits.	Week of 8/12/19			
Approval of plans & specs/set bid date				
**Advertisement for bids prepared.				
*Advertisement for bids published.				
Discuss Project. (Optional)				
***Bids received, opened & tabulated.				
Recommend award of contract.				
Award Contract.				

*Responsibility of Finance & Administrative Services Office

**Responsibility of Engineering Department.

***Responsibility of Finance & Administrative Service Office & Engineering Department.







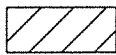
DISTRICT
541.1

DISTRICT
541.1

UNPLATTED

STORM WATER PONDS FOR CRARY ADDITIONS

LEGEND

-  PREVIOUS ASSESSMENT DISTRICT
-  ASSESSMENT DISTRICT BOUNDARY
-  PROJECT LIMITS
-  CITY LIMITS
-  REMAINING FUTURE ASSESSMENT DISTRICT

PROJECT # 7768.1
DISTRICT #541.1

PROJECT #7768.1 STORMWATER POND CRARY'S 6TH RESUB

DISTRICT #541.1

DEFERRED UNTIL 2021

Property Number	Name	Legal Address	Addition	Use Code	Square Ft In Database	Sq Ft from Street	Total Square Feet	Cost \$0.150771 \$0.020860	Deferred Interest 0.0384	Project 7768.1 Special Assessment
1379.005.00	CRARY DEVELOPMENT, INC	5979 COTTONWOOD ST	CRARY'S SEVENTH ADDITION	R	7,790.0	2,120.0	9,910.0	\$206.72	\$7.94	\$214.66
1379.006.00	CRARY DEVELOPMENT, INC	5985 COTTONWOOD ST	CRARY'S SEVENTH ADDITION	R	8,893.0	2,440.0	11,333.0	\$236.41	\$9.08	\$245.49
1379.007.00	CRARY DEVELOPMENT, INC	6011 COTTONWOOD ST	CRARY'S SEVENTH ADDITION	R	7,579.0	2,000.0	9,579.0	\$203.99	\$7.83	\$211.82
1379.008.00	CRARY DEVELOPMENT, INC	6027 COTTONWOOD ST	CRARY'S SEVENTH ADDITION	R	9,103.0	3,000.0	12,103.0	\$252.47	\$9.69	\$262.16
1379.009.00	CRARY DEVELOPMENT, INC	6043 COTTONWOOD ST	CRARY'S SEVENTH ADDITION	R	8,338.0	2,960.0	11,298.0	\$235.68	\$9.05	\$244.73
1379.010.00	CRARY DEVELOPMENT, INC	6059 COTTONWOOD ST	CRARY'S SEVENTH ADDITION	R	9,011.0	3,080.0	12,091.0	\$252.22	\$9.69	\$261.91
1379.011.00	CRARY DEVELOPMENT, INC	6077 COTTONWOOD ST	CRARY'S SEVENTH ADDITION	R	7,280.0	2,240.0	9,520.0	\$198.59	\$7.63	\$206.22
1379.012.00	CRARY DEVELOPMENT, INC	6095 COTTONWOOD ST	CRARY'S SEVENTH ADDITION	R	8,840.0	2,720.0	11,560.0	\$241.14	\$9.26	\$250.40
1379.013.00	CRARY DEVELOPMENT, INC	453 WREN DR	CRARY'S SEVENTH ADDITION	R	8,400.0	2,240.0	10,640.0	\$241.14	\$9.26	\$250.40
1379.014.00	CRARY DEVELOPMENT, INC	457 WREN DR	CRARY'S SEVENTH ADDITION	R	7,280.0	2,240.0	9,520.0	\$198.59	\$7.63	\$206.22
1379.015.00	CRARY DEVELOPMENT, INC	461 WREN DR	CRARY'S SEVENTH ADDITION	R	9,773.0	2,320.0	12,093.0	\$252.26	\$9.69	\$261.95
1379.016.00	CRARY DEVELOPMENT, INC	465 WREN DR	CRARY'S SEVENTH ADDITION	R	8,687.0	2,480.0	11,167.0	\$232.94	\$8.94	\$241.88
1379.017.00	CRARY DEVELOPMENT, INC	469 WREN DR	CRARY'S SEVENTH ADDITION	R	8,320.0	2,640.0	10,972.0	\$228.88	\$8.79	\$237.67
1379.018.00	CRARY DEVELOPMENT, INC	473 WREN DR	CRARY'S SEVENTH ADDITION	R	8,505.0	2,840.0	11,345.0	\$236.66	\$9.09	\$245.75
1379.019.00	CRARY DEVELOPMENT, INC	477 WREN DR	CRARY'S SEVENTH ADDITION	R	8,445.0	2,840.0	11,285.0	\$235.41	\$9.04	\$244.45
1379.020.00	CRARY DEVELOPMENT, INC	481 WREN DR	CRARY'S SEVENTH ADDITION	R	7,428.0	2,480.0	9,908.0	\$206.68	\$7.94	\$214.62
1379.021.00	CRARY DEVELOPMENT, INC	485 WREN DR	CRARY'S SEVENTH ADDITION	R	8,457.0	2,720.0	11,177.0	\$233.15	\$8.95	\$242.10
1379.022.00	CRARY DEVELOPMENT, INC	489 WREN DR	CRARY'S SEVENTH ADDITION	R	7,280.0	2,240.0	9,520.0	\$198.59	\$7.63	\$206.22
1379.026.00	CRARY DEVELOPMENT, INC	487 59TH AVE S	CRARY'S SEVENTH ADDITION	R	8,828.0	2,400.0	11,388.0	\$237.55	\$9.12	\$246.67
1379.027.00	CRARY DEVELOPMENT, INC	475 59TH AVE S	CRARY'S SEVENTH ADDITION	R	7,465.0	2,240.0	9,705.0	\$202.45	\$7.77	\$210.22
1379.028.00	CRARY DEVELOPMENT, INC	463 59TH AVE S	CRARY'S SEVENTH ADDITION	R	8,367.0	2,560.0	10,927.0	\$221.94	\$8.75	\$230.69
1379.029.00	CRARY DEVELOPMENT, INC	451 59TH AVE S	CRARY'S SEVENTH ADDITION	R	7,821.0	2,240.0	10,061.0	\$209.87	\$8.06	\$217.93
1379.030.00	CRARY DEVELOPMENT, INC	439 59TH AVE S	CRARY'S SEVENTH ADDITION	R	8,320.0	2,560.0	10,880.0	\$226.96	\$8.72	\$235.68
1379.031.00	CRARY DEVELOPMENT, INC	427 59TH AVE S	CRARY'S SEVENTH ADDITION	R	7,280.0	2,240.0	9,520.0	\$198.59	\$7.63	\$206.22
1379.032.00	CRARY DEVELOPMENT, INC	413 59TH AVE S	CRARY'S SEVENTH ADDITION	R	7,840.0	2,240.0	10,080.0	\$219.59	\$9.26	\$228.85
1379.033.00	CRARY DEVELOPMENT, INC	401 59TH AVE S	CRARY'S SEVENTH ADDITION	R	8,840.0	2,720.0	11,560.0	\$241.14	\$9.26	\$250.40
1379.034.00	CRARY DEVELOPMENT, INC	402 PLYMOUTH LANE	CRARY'S SEVENTH ADDITION	R	8,400.0	2,720.0	11,120.0	\$241.14	\$9.26	\$250.40
1379.035.00	CRARY DEVELOPMENT, INC	414 PLYMOUTH LANE	CRARY'S SEVENTH ADDITION	R	7,280.0	2,240.0	9,520.0	\$198.59	\$7.63	\$206.22
1379.036.00	CRARY DEVELOPMENT, INC	426 PLYMOUTH LANE	CRARY'S SEVENTH ADDITION	R	7,280.0	2,240.0	9,520.0	\$198.59	\$7.63	\$206.22
1379.037.00	CRARY DEVELOPMENT, INC	438 PLYMOUTH LANE	CRARY'S SEVENTH ADDITION	R	8,320.0	2,560.0	10,880.0	\$226.96	\$8.72	\$235.68
1379.038.00	CRARY DEVELOPMENT, INC	450 PLYMOUTH LANE	CRARY'S SEVENTH ADDITION	R	7,280.0	2,240.0	9,520.0	\$198.59	\$7.63	\$206.22
1379.039.00	CRARY DEVELOPMENT, INC	462 PLYMOUTH LANE	CRARY'S SEVENTH ADDITION	R	8,320.0	2,560.0	10,880.0	\$226.96	\$8.72	\$235.68
1379.040.00	CRARY DEVELOPMENT, INC	474 PLYMOUTH LANE	CRARY'S SEVENTH ADDITION	R	7,280.0	2,240.0	9,520.0	\$198.59	\$7.63	\$206.22
1379.041.00	CRARY DEVELOPMENT, INC	486 PLYMOUTH LANE	CRARY'S SEVENTH ADDITION	R	8,320.0	2,560.0	10,880.0	\$226.96	\$8.72	\$235.68
1379.042.00	CRARY DEVELOPMENT, INC	498 PLYMOUTH LANE	CRARY'S SEVENTH ADDITION	R	10,143.0	3,240.0	13,383.0	\$279.17	\$10.72	\$289.89
1379.043.00	CRARY DEVELOPMENT, INC	301 WREN DR	CRARY'S SEVENTH ADDITION	R	10,732.0	3,080.0	13,812.0	\$288.12	\$11.06	\$299.18
1379.044.00	CRARY DEVELOPMENT, INC	307 WREN DR	CRARY'S SEVENTH ADDITION	R	8,920.0	2,560.0	11,480.0	\$239.47	\$9.20	\$248.67
1379.045.00	CRARY DEVELOPMENT, INC	313 WREN DR	CRARY'S SEVENTH ADDITION	R	8,920.0	2,560.0	11,480.0	\$239.47	\$9.20	\$248.67
1379.046.00	CRARY DEVELOPMENT, INC	319 WREN DR	CRARY'S SEVENTH ADDITION	R	10,175.0	2,920.0	13,095.0	\$273.16	\$10.49	\$283.65
1379.047.00	CRARY DEVELOPMENT, INC	325 WREN DR	CRARY'S SEVENTH ADDITION	R	8,920.0	2,560.0	11,480.0	\$239.47	\$9.20	\$248.67
1379.048.00	CRARY DEVELOPMENT, INC	331 WREN DR	CRARY'S SEVENTH ADDITION	R	10,175.0	2,920.0	13,095.0	\$273.16	\$10.49	\$283.65
1379.049.00	CRARY DEVELOPMENT, INC	337 WREN DR	CRARY'S SEVENTH ADDITION	R	8,920.0	2,560.0	11,480.0	\$239.47	\$9.20	\$248.67
1379.050.00	CRARY DEVELOPMENT, INC	343 WREN DR	CRARY'S SEVENTH ADDITION	R	10,175.0	2,920.0	13,095.0	\$273.16	\$10.49	\$283.65
1379.051.00	CRARY DEVELOPMENT, INC	349 WREN DR	CRARY'S SEVENTH ADDITION	R	8,920.0	2,560.0	11,480.0	\$239.47	\$9.20	\$248.67
1379.052.00	CRARY DEVELOPMENT, INC	355 WREN DR	CRARY'S SEVENTH ADDITION	R	10,175.0	2,920.0	13,095.0	\$273.16	\$10.49	\$283.65
1379.053.00	CRARY DEVELOPMENT, INC	361 WREN DR	CRARY'S SEVENTH ADDITION	R	8,920.0	2,560.0	11,480.0	\$239.47	\$9.20	\$248.67
1379.054.00	CRARY DEVELOPMENT, INC	367 WREN DR	CRARY'S SEVENTH ADDITION	R	8,920.0	2,560.0	11,480.0	\$239.47	\$9.20	\$248.67
1379.055.00	CRARY DEVELOPMENT, INC	373 WREN DR	CRARY'S SEVENTH ADDITION	R	11,288.0	2,760.0	14,048.0	\$293.04	\$11.25	\$304.29
1379.056.00	CRARY DEVELOPMENT, INC	379 WREN DR	CRARY'S SEVENTH ADDITION	R	15,495.0	2,080.0	17,575.0	\$366.61	\$14.08	\$380.69
1379.057.00	CRARY DEVELOPMENT, INC	385 WREN DR	CRARY'S SEVENTH ADDITION	R	21,700.0	2,080.0	23,780.0	\$496.05	\$19.05	\$515.10
1379.058.00	CRARY DEVELOPMENT, INC	389 WREN DR	CRARY'S SEVENTH ADDITION	R	13,238.0	2,120.0	15,358.0	\$320.37	\$12.30	\$332.67
1379.059.00	CRARY DEVELOPMENT, INC	391 WREN DR	CRARY'S SEVENTH ADDITION	R	8,288.0	2,240.0	10,528.0	\$219.61	\$8.43	\$228.04
1379.060.00	CRARY DEVELOPMENT, INC	393 WREN DR	CRARY'S SEVENTH ADDITION	R	9,472.0	2,560.0	12,032.0	\$250.99	\$9.64	\$260.63
1379.061.00	CRARY DEVELOPMENT, INC	395 WREN DR	CRARY'S SEVENTH ADDITION	R	8,288.0	2,240.0	10,528.0	\$219.61	\$8.43	\$228.04
1379.062.00	CRARY DEVELOPMENT, INC	397 WREN DR	CRARY'S SEVENTH ADDITION	R	9,472.0	2,560.0	12,032.0	\$250.99	\$9.64	\$260.63
1379.063.00	CRARY DEVELOPMENT, INC	399 WREN DR	CRARY'S SEVENTH ADDITION	R	8,288.0	2,240.0	10,528.0	\$219.61	\$8.43	\$228.04
1379.064.00	CRARY DEVELOPMENT, INC	401 WREN DR	CRARY'S SEVENTH ADDITION	R	9,472.0	2,560.0	12,032.0	\$250.99	\$9.64	\$260.63

1379.065.00	CRARY DEVELOPMENT, INC	403 WREN DR	CRARY'S SEVENTH ADDITION	R	8,288.0	2,240.0	10,528.0	\$219.61	\$8.43	\$228.04
1379.066.00	CRARY DEVELOPMENT, INC	405 WREN DR	CRARY'S SEVENTH ADDITION	R	9,472.0	2,560.0	12,032.0	\$250.99	\$9.64	\$260.63
1379.067.00	CRARY DEVELOPMENT, INC	407 WREN DR	CRARY'S SEVENTH ADDITION	R	8,288.0	2,240.0	10,528.0	\$219.61	\$8.43	\$228.04
1379.068.00	CRARY DEVELOPMENT, INC	409 WREN DR	CRARY'S SEVENTH ADDITION	R	10,099.0	2,560.0	12,659.0	\$264.07	\$10.14	\$274.21
1379.069.00	CRARY DEVELOPMENT, INC	413 WREN DR	CRARY'S SEVENTH ADDITION	R	14,970.0	2,080.0	17,050.0	\$365.66	\$13.66	\$369.32
1379.070.00	CRARY DEVELOPMENT, INC	419 WREN DR	CRARY'S SEVENTH ADDITION	R	20,860.0	2,080.0	22,960.0	\$478.95	\$18.39	\$497.34
1379.071.00	CRARY DEVELOPMENT, INC	425 WREN DR	CRARY'S SEVENTH ADDITION	R	12,450.0	2,000.0	14,450.0	\$301.43	\$11.57	\$313.00
1379.072.00	CRARY DEVELOPMENT, INC	431 WREN DR	CRARY'S SEVENTH ADDITION	R	8,840.0	2,720.0	11,560.0	\$241.14	\$9.26	\$250.40
1379.073.00	CRARY DEVELOPMENT, INC	6103 COTTONWOOD ST	CRARY'S SEVENTH ADDITION	R	7,540.0	2,720.0	10,260.0	\$241.14	\$9.26	\$250.40
1379.074.00	CRARY DEVELOPMENT, INC	6121 COTTONWOOD ST	CRARY'S SEVENTH ADDITION	R	8,840.0	2,320.0	11,160.0	\$241.14	\$9.26	\$250.40
1379.075.00	CRARY DEVELOPMENT, INC	6139 COTTONWOOD ST	CRARY'S SEVENTH ADDITION	R	8,320.0	2,560.0	10,880.0	\$226.68	\$8.72	\$235.68
1379.076.00	CRARY DEVELOPMENT, INC	6157 COTTONWOOD ST	CRARY'S SEVENTH ADDITION	R	7,540.0	2,320.0	9,860.0	\$205.68	\$7.90	\$213.58
1379.077.00	CRARY DEVELOPMENT, INC	6175 COTTONWOOD ST	CRARY'S SEVENTH ADDITION	R	8,510.0	2,600.0	11,110.0	\$231.75	\$8.90	\$240.65
1379.078.00	CRARY DEVELOPMENT, INC	499 PLYMOUTH LANE	CRARY'S SEVENTH ADDITION	R	12,111.0	3,080.0	15,191.0	\$316.88	\$12.17	\$329.05
1379.079.00	CRARY DEVELOPMENT, INC	487 PLYMOUTH LANE	CRARY'S SEVENTH ADDITION	R	8,320.0	2,560.0	10,880.0	\$226.68	\$8.72	\$235.68
1379.080.00	CRARY DEVELOPMENT, INC	475 PLYMOUTH LANE	CRARY'S SEVENTH ADDITION	R	7,280.0	2,240.0	9,520.0	\$198.59	\$7.63	\$206.22
1379.081.00	CRARY DEVELOPMENT, INC	463 PLYMOUTH LANE	CRARY'S SEVENTH ADDITION	R	8,320.0	2,560.0	10,880.0	\$226.68	\$8.72	\$235.68
1379.082.00	CRARY DEVELOPMENT, INC	451 PLYMOUTH LANE	CRARY'S SEVENTH ADDITION	R	8,320.0	2,560.0	10,880.0	\$226.68	\$8.72	\$235.68
1379.083.00	CRARY DEVELOPMENT, INC	439 PLYMOUTH LANE	CRARY'S SEVENTH ADDITION	R	8,320.0	2,560.0	10,880.0	\$226.68	\$8.72	\$235.68
1379.084.00	CRARY DEVELOPMENT, INC	427 PLYMOUTH LANE	CRARY'S SEVENTH ADDITION	R	8,320.0	2,560.0	10,880.0	\$226.68	\$8.72	\$235.68
1379.085.00	CRARY DEVELOPMENT, INC	415 PLYMOUTH LANE	CRARY'S SEVENTH ADDITION	R	7,280.0	2,240.0	9,520.0	\$198.59	\$7.63	\$206.22
1379.086.00	CRARY DEVELOPMENT, INC	403 PLYMOUTH LANE	CRARY'S SEVENTH ADDITION	R	8,840.0	2,720.0	11,560.0	\$241.14	\$9.26	\$250.40
1379.087.00	CRARY DEVELOPMENT, INC	340 WREN DR	CRARY'S SEVENTH ADDITION	R	7,280.0	2,240.0	9,520.0	\$198.59	\$7.63	\$206.22
1379.088.00	CRARY DEVELOPMENT, INC	346 WREN DR	CRARY'S SEVENTH ADDITION	R	7,280.0	2,240.0	9,520.0	\$198.59	\$7.63	\$206.22
1379.089.00	CRARY DEVELOPMENT, INC	352 WREN DR	CRARY'S SEVENTH ADDITION	R	8,320.0	2,560.0	10,880.0	\$226.68	\$8.72	\$235.68
1379.090.00	CRARY DEVELOPMENT, INC	358 WREN DR	CRARY'S SEVENTH ADDITION	R	8,320.0	2,240.0	10,560.0	\$198.59	\$7.63	\$206.22
1379.091.00	CRARY DEVELOPMENT, INC	362 WREN DR	CRARY'S SEVENTH ADDITION	R	7,280.0	2,560.0	9,840.0	\$226.68	\$8.72	\$235.68
1379.092.00	CRARY DEVELOPMENT, INC	366 WREN DR	CRARY'S SEVENTH ADDITION	R	7,280.0	2,240.0	9,520.0	\$198.59	\$7.63	\$206.22
1379.093.00	CRARY DEVELOPMENT, INC	372 WREN DR	CRARY'S SEVENTH ADDITION	R	9,055.0	2,840.0	11,895.0	\$248.13	\$9.53	\$257.66
1379.094.00	CRARY DEVELOPMENT, INC	380 HUMMEL CT	CRARY'S SEVENTH ADDITION	R	10,963.0	2,800.0	13,763.0	\$287.10	\$11.02	\$298.12
1379.095.00	CRARY DEVELOPMENT, INC	384 HUMMEL CT	CRARY'S SEVENTH ADDITION	R	8,760.0	2,240.0	11,000.0	\$8.81	\$8.81	\$238.27
1379.096.00	CRARY DEVELOPMENT, INC	388 HUMMEL CT	CRARY'S SEVENTH ADDITION	R	9,911.0	2,560.0	12,471.0	\$229.46	\$8.81	\$270.14
1379.097.00	CRARY DEVELOPMENT, INC	392 HUMMEL CT	CRARY'S SEVENTH ADDITION	R	12,068.0	2,560.0	14,628.0	\$305.14	\$11.72	\$316.86
1379.098.00	CRARY DEVELOPMENT, INC	396 HUMMEL CT	CRARY'S SEVENTH ADDITION	R	20,603.0	2,080.0	22,683.0	\$473.17	\$18.17	\$491.34
1379.099.00	CRARY DEVELOPMENT, INC	400 HUMMEL CT	CRARY'S SEVENTH ADDITION	R	15,346.0	2,560.0	17,906.0	\$373.52	\$14.34	\$387.86
1379.100.00	CRARY DEVELOPMENT, INC	404 HUMMEL CT	CRARY'S SEVENTH ADDITION	R	17,512.0	2,080.0	19,592.0	\$408.69	\$15.69	\$424.38
1379.101.00	CRARY DEVELOPMENT, INC	410 HUMMEL CT	CRARY'S SEVENTH ADDITION	R	11,292.0	2,200.0	13,492.0	\$281.44	\$10.81	\$292.25
1379.102.00	CRARY DEVELOPMENT, INC	414 HUMMEL CT	CRARY'S SEVENTH ADDITION	R	9,903.0	2,600.0	12,503.0	\$260.81	\$10.02	\$270.83
1379.103.00	CRARY DEVELOPMENT, INC	418 HUMMEL CT	CRARY'S SEVENTH ADDITION	R	8,761.0	2,240.0	11,001.0	\$229.46	\$8.81	\$270.14
1379.104.00	CRARY DEVELOPMENT, INC	422 HUMMEL CT	CRARY'S SEVENTH ADDITION	R	10,804.0	2,760.0	13,564.0	\$282.95	\$10.87	\$293.82
1379.105.00	CRARY DEVELOPMENT, INC	430 WREN DR	CRARY'S SEVENTH ADDITION	R	8,765.0	2,720.0	11,485.0	\$239.58	\$9.20	\$248.78
1379.106.00	CRARY DEVELOPMENT, INC	436 WREN DR	CRARY'S SEVENTH ADDITION	R	8,320.0	2,560.0	10,880.0	\$198.59	\$7.63	\$206.22
1379.107.00	CRARY DEVELOPMENT, INC	442 WREN DR	CRARY'S SEVENTH ADDITION	R	7,280.0	2,240.0	9,520.0	\$198.59	\$7.63	\$206.22
1379.108.00	CRARY DEVELOPMENT, INC	454 WREN DR	CRARY'S SEVENTH ADDITION	R	7,280.0	2,240.0	9,520.0	\$198.59	\$7.63	\$206.22
1379.109.00	CRARY DEVELOPMENT, INC	460 WREN DR	CRARY'S SEVENTH ADDITION	R	8,375.0	2,560.0	10,935.0	\$228.10	\$8.76	\$236.86
1379.110.00	CRARY DEVELOPMENT, INC	464 WREN DR	CRARY'S SEVENTH ADDITION	R	7,707.0	2,360.0	10,067.0	\$210.00	\$8.06	\$218.06
1379.111.00	CRARY DEVELOPMENT, INC	468 WREN DR	CRARY'S SEVENTH ADDITION	R	7,735.0	2,240.0	9,975.0	\$208.08	\$7.99	\$216.07
1380.001.00	CRARY DEVELOPMENT, INC	476 CROMWELL DR	CRARY'S EIGHTH RESUBDIVISION	R	9,634.0	2,760.0	12,394.0	\$259.54	\$9.93	\$268.47
1380.002.00	CRARY DEVELOPMENT, INC	468 CROMWELL DR	CRARY'S EIGHTH RESUBDIVISION	R	9,059.0	2,560.0	11,619.0	\$242.37	\$9.31	\$251.68
1380.003.00	CRARY DEVELOPMENT, INC	460 CROMWELL DR	CRARY'S EIGHTH RESUBDIVISION	R	9,059.0	2,560.0	11,619.0	\$242.37	\$9.31	\$251.68
1380.004.00	CRARY DEVELOPMENT, INC	452 CROMWELL DR	CRARY'S EIGHTH RESUBDIVISION	R	9,059.0	2,560.0	11,619.0	\$242.37	\$9.31	\$251.68
1380.005.00	CRARY DEVELOPMENT, INC	444 CROMWELL DR	CRARY'S EIGHTH RESUBDIVISION	R	8,992.0	2,560.0	11,552.0	\$240.97	\$9.25	\$251.68
1380.006.00	CRARY DEVELOPMENT, INC	438 CROMWELL DR	CRARY'S EIGHTH RESUBDIVISION	R	11,936.0	2,120.0	14,056.0	\$293.21	\$11.26	\$304.47
1380.007.00	CRARY DEVELOPMENT, INC	430 CROMWELL DR	CRARY'S EIGHTH RESUBDIVISION	R	17,933.0	2,120.0	20,053.0	\$418.31	\$16.06	\$434.37
1380.008.00	CRARY DEVELOPMENT, INC	420 CROMWELL DR	CRARY'S EIGHTH RESUBDIVISION	R	13,457.0	2,120.0	15,577.0	\$324.94	\$12.48	\$337.42
1380.009.00	CRARY DEVELOPMENT, INC	408 CROMWELL DR	CRARY'S EIGHTH RESUBDIVISION	R	9,081.0	2,520.0	11,601.0	\$242.00	\$9.29	\$251.29
1380.010.00	CRARY DEVELOPMENT, INC	398 CROMWELL DR	CRARY'S EIGHTH RESUBDIVISION	R	8,606.0	2,560.0	11,166.0	\$232.92	\$8.94	\$241.86
1380.011.00	CRARY DEVELOPMENT, INC	390 CROMWELL DR	CRARY'S EIGHTH RESUBDIVISION	R	8,606.0	2,560.0	11,166.0	\$232.92	\$8.94	\$241.86
1380.012.00	CRARY DEVELOPMENT, INC	380 CROMWELL DR	CRARY'S EIGHTH RESUBDIVISION	R	9,357.0	2,440.0	11,797.0	\$246.09	\$9.45	\$255.54
1380.013.00	CRARY DEVELOPMENT, INC	368 CROMWELL DR	CRARY'S EIGHTH RESUBDIVISION	R	14,177.0	2,120.0	16,297.0	\$339.96	\$13.05	\$353.01
1380.014.00	CRARY DEVELOPMENT, INC	352 CROMWELL DR	CRARY'S EIGHTH RESUBDIVISION	R	19,937.0	2,120.0	22,057.0	\$460.11	\$17.67	\$477.78
1380.015.00	CRARY DEVELOPMENT, INC	344 CROMWELL DR	CRARY'S EIGHTH RESUBDIVISION	R	12,044.0	2,160.0	14,204.0	\$296.30	\$11.38	\$307.68
1380.016.00	CRARY DEVELOPMENT, INC	336 CROMWELL DR	CRARY'S EIGHTH RESUBDIVISION	R	8,667.0	2,560.0	11,227.0	\$234.20	\$8.99	\$243.19
1380.017.00	CRARY DEVELOPMENT, INC	328 CROMWELL DR	CRARY'S EIGHTH RESUBDIVISION	R	8,667.0	2,560.0	11,227.0	\$234.20	\$8.99	\$243.19
1380.018.00	CRARY DEVELOPMENT, INC	320 CROMWELL DR	CRARY'S EIGHTH RESUBDIVISION	R	8,667.0	2,560.0	11,227.0	\$234.20	\$8.99	\$243.19

