



City of Grand Forks
Staff Report
Committee of the Whole – August 12, 2019
City Council – August 19, 2019

Agenda Item: Assessment district project #7245.1 Storm Sewer-Crary's Second Addition, District #508.1 for newly annexed property in the future assessment district. The property is in Crary's Seventh Addition, Crary's Eighth Resubdivision, Crary's Ninth Addition and Unplatted parts in GF Township.

Submitted by: Maureen Storstad, Director of Finance & Administrative Services

Staff Recommended Action: Include newly annexed property within the special assessment district #508.1 and authorize subsequent assessment for Storm Sewer for Crary's Second Addition to newly annexed property.

August 12, 2019 – Committee Recommended Action:

August 19, 2019 – Council Action:

BACKGROUND: In 2015, the Storm Sewer for Crary's Second Addition was completed and assessed to properties in district #508. This project also benefited a future special assessment district, which we are now proposing to assess as district #508.1. The newly annexed area is in Crary's Seventh Addition, Crary's Eighth Resubdivision, Crary's Ninth Addition and Unplatted parts in GF Township.

ANALYSIS AND FINDINGS OF FACT:

- The Special Assessment Commissioners found that all properties within the district area and a future assessment area would benefit from the storm sewer project and, therefore, should all be assessed.
- Staff is assessing newly annexed property on a timely basis.
- The dollar amount of this assessment to the newly annexed property is \$100,763.91.
- Property on the listing will be fully assessed for this project.

SUPPORT MATERIALS:

- Engineer's Report showing timeline and special assessment district map.
- Spreadsheet calculating benefit to new properties.

ENGINEER'S REPORT

District No. 508.1 (Project No. 7245.1)

The following report is submitted to the City Council of Grand Forks regarding the proposed Project No. 7245.1 benefiting

District No. 508.1

1. Purpose and general nature:

Improvement of the municipal system serving the district by:

Storm Sewer Outfall Piping

2. Location:

Described as follows:
Crary's 2nd Addition.

3. Feasibility and cost:

In the opinion of the undersigned, the improvement is feasible and the probable cost thereof is estimated to be approximately \$100,763.91.

4. A map of the district is attached.

_____ Date

_____ Allen R. Grasser, PE – City Engineer

Future Area Assessments	Dollar Amount	Square Footage
Total Assessed	\$167,803.78	3,781,080
Less District #508.1 Share	\$110,476.05	2,489,324
Remaining Future Area Share	\$57,327.73	1,291,756

TIMETABLE FOR SPECIAL ASSESSMENT PROJECTS

Project Name Storm Sewer for Crary's 2nd Addition & LeClerc's Addition

Project No 7245.1

Dist No 508.1

- Water
- Sewer
- Water & Sewer
- Sidewalk
- Other _____

This timetable prepared by Finance

Date 8/6/2019

Action

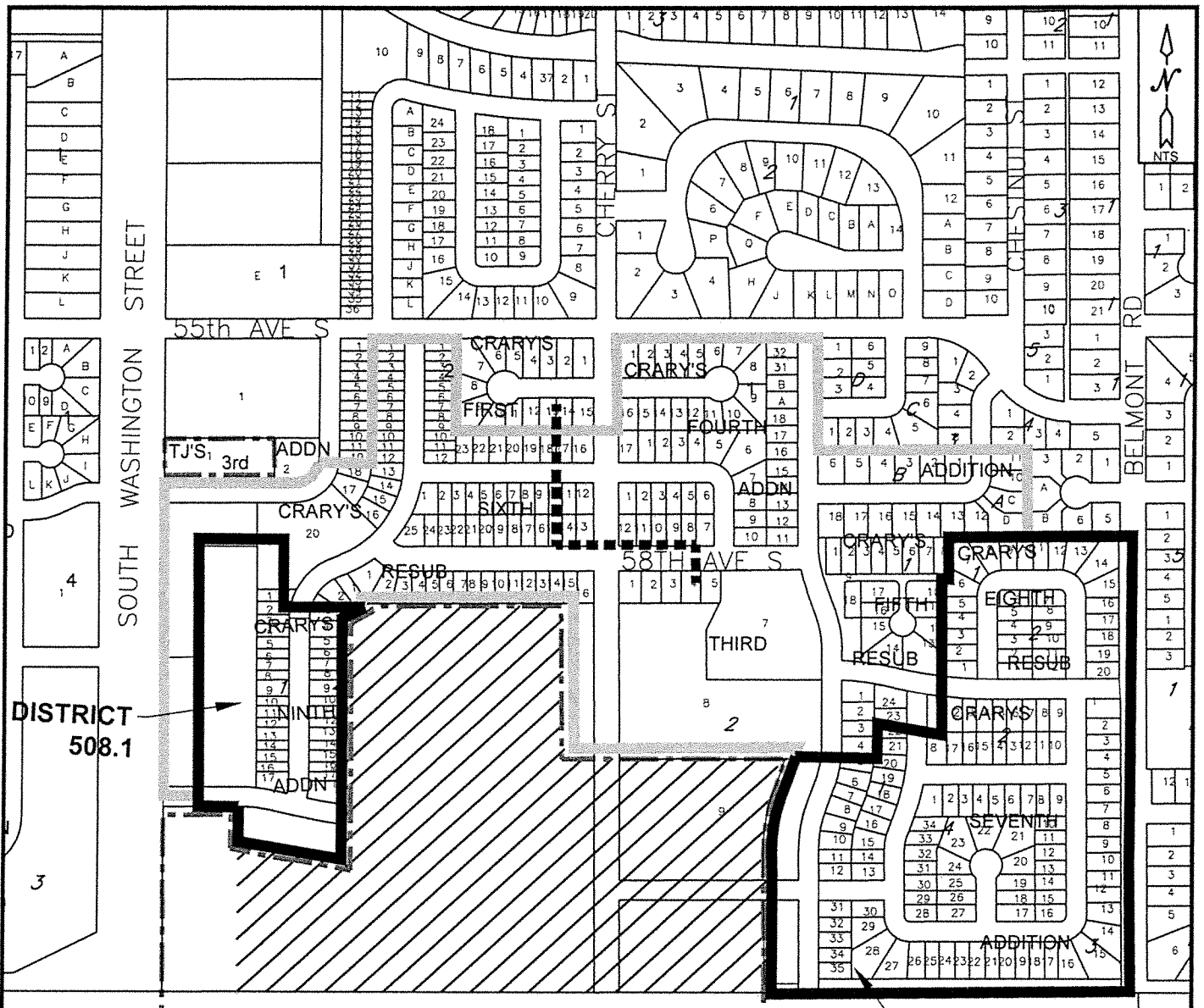
Date of Action

Action	Date of Action			Approved
	Other	Committee	Council	
Approval of Engineers Report including estimate. Resolution creating assessment district. Direct engineering to prepare plans & specifications, and advertise for construction bids.		8/12/2019	8/19/2019	
*Notices sent to property owners.	Week of 8/12/2019			
*Special Assessment Commission to meet to determine preliminary distribution of benefits.	Week of 8/12/2019			
Approval of plans & specs/set bid date.				
**Advertisement for bids prepared.				
*Advertisement for bids published.				
Discuss Project. (Optional)				
***Bids received, opened & tabulated.				
Recommend award of contract.				
Award Contract.				

*Responsibility of Finance & Administrative Services Office

**Responsibility of Engineering Department.

***Responsibility of Finance & Administrative Service Office & Engineering Department.







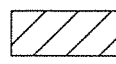
62ND AVE SOUTH

DISTRICT 508.1

UNPLATTED

STORM SEWER FOR CRARY'S SECOND ADDITION

LEGEND

-  PREVIOUS ASSESSMENT DISTRICT
-  ASSESSMENT DISTRICT BOUNDARY
-  PROJECT LIMITS
-  CITY LIMITS
-  REMAINING FUTURE ASSESSMENT DISTRICT

PROJECT # 7245.1
DISTRICT # 508.1

PROJECT #7245.1 STORM SEWER CRARY'S 2ND ADDITION

DISTRICT #508.1

Property Number	Name	Legal Address	Addition	Use Code	Square Ft in Database	Sq Ft Area for Street	Total Cost	Cost \$0.044380	Less Amt Previously Assessed	Project 7425.1 Special Assessment
1379.001.00	CRARY DEVELOPMENT, INC	5903 COTTONWOOD ST	CRARY'S SEVENTH ADDITION	R	10,447.0	3,200.0	13,647.0	\$605.65	\$605.65	\$0.00
1379.002.00	CRARY DEVELOPMENT, INC	5921 COTTONWOOD ST	CRARY'S SEVENTH ADDITION	R	9,490.0	2,920.0	12,410.0	\$550.76	\$550.76	\$0.00
1379.003.00	CRARY DEVELOPMENT, INC	5939 COTTONWOOD ST	CRARY'S SEVENTH ADDITION	R	8,320.0	2,560.0	10,880.0	\$482.85	\$482.85	\$0.00
1379.004.00	CRARY DEVELOPMENT, INC	5961 COTTONWOOD ST	CRARY'S SEVENTH ADDITION	R	9,838.0	2,840.0	12,678.0	\$562.65	\$562.65	\$0.00
1379.005.00	CRARY DEVELOPMENT, INC	5979 COTTONWOOD ST	CRARY'S SEVENTH ADDITION	R	7,990.0	2,120.0	9,910.0	\$439.81	\$0.00	\$439.81
1379.006.00	CRARY DEVELOPMENT, INC	5985 COTTONWOOD ST	CRARY'S SEVENTH ADDITION	R	8,893.0	2,440.0	11,333.0	\$502.96	\$0.00	\$502.96
1379.007.00	CRARY DEVELOPMENT, INC	6011 COTTONWOOD ST	CRARY'S SEVENTH ADDITION	R	7,579.0	2,200.0	9,779.0	\$433.99	\$0.00	\$433.99
1379.008.00	CRARY DEVELOPMENT, INC	6027 COTTONWOOD ST	CRARY'S SEVENTH ADDITION	R	9,103.0	3,000.0	12,103.0	\$537.13	\$0.00	\$537.13
1379.009.00	CRARY DEVELOPMENT, INC	6043 COTTONWOOD ST	CRARY'S SEVENTH ADDITION	R	8,338.0	2,960.0	11,298.0	\$501.41	\$0.00	\$501.41
1379.010.00	CRARY DEVELOPMENT, INC	6059 COTTONWOOD ST	CRARY'S SEVENTH ADDITION	R	9,011.0	3,080.0	12,091.0	\$536.60	\$0.00	\$536.60
1379.011.00	CRARY DEVELOPMENT, INC	6077 COTTONWOOD ST	CRARY'S SEVENTH ADDITION	R	7,280.0	2,240.0	9,520.0	\$422.50	\$0.00	\$422.50
1379.012.00	CRARY DEVELOPMENT, INC	6095 COTTONWOOD ST	CRARY'S SEVENTH ADDITION	R	8,840.0	2,720.0	11,560.0	\$513.03	\$0.00	\$513.03
1379.013.00	CRARY DEVELOPMENT, INC	453 WREN DR	CRARY'S SEVENTH ADDITION	R	8,840.0	2,720.0	11,560.0	\$513.03	\$0.00	\$513.03
1379.014.00	CRARY DEVELOPMENT, INC	457 WREN DR	CRARY'S SEVENTH ADDITION	R	7,280.0	2,240.0	9,520.0	\$422.50	\$0.00	\$422.50
1379.015.00	CRARY DEVELOPMENT, INC	461 WREN DR	CRARY'S SEVENTH ADDITION	R	9,773.0	2,320.0	12,093.0	\$536.69	\$0.00	\$536.69
1379.016.00	CRARY DEVELOPMENT, INC	465 WREN DR	CRARY'S SEVENTH ADDITION	R	8,687.0	2,480.0	11,167.0	\$485.59	\$0.00	\$485.59
1379.017.00	CRARY DEVELOPMENT, INC	469 WREN DR	CRARY'S SEVENTH ADDITION	R	8,332.0	2,640.0	10,972.0	\$486.94	\$0.00	\$486.94
1379.018.00	CRARY DEVELOPMENT, INC	473 WREN DR	CRARY'S SEVENTH ADDITION	R	8,505.0	2,840.0	11,345.0	\$503.49	\$0.00	\$503.49
1379.019.00	CRARY DEVELOPMENT, INC	477 WREN DR	CRARY'S SEVENTH ADDITION	R	8,445.0	2,840.0	11,285.0	\$500.83	\$0.00	\$500.83
1379.020.00	CRARY DEVELOPMENT, INC	481 WREN DR	CRARY'S SEVENTH ADDITION	R	7,428.0	2,480.0	9,908.0	\$439.72	\$0.00	\$439.72
1379.021.00	CRARY DEVELOPMENT, INC	485 WREN DR	CRARY'S SEVENTH ADDITION	R	8,457.0	2,720.0	11,177.0	\$496.04	\$0.00	\$496.04
1379.022.00	CRARY DEVELOPMENT, INC	489 WREN DR	CRARY'S SEVENTH ADDITION	R	7,280.0	2,240.0	9,520.0	\$422.50	\$0.00	\$422.50
1379.023.00	CRARY DEVELOPMENT, INC	493 WREN DR	CRARY'S SEVENTH ADDITION	R	8,320.0	2,560.0	10,880.0	\$482.85	\$482.85	\$0.00
1379.024.00	CRARY DEVELOPMENT, INC	499 WREN DR	CRARY'S SEVENTH ADDITION	R	10,781.0	2,760.0	13,541.0	\$600.95	\$600.95	\$0.00
1379.025.00	CRARY DEVELOPMENT, INC	499 59TH AVE S	CRARY'S SEVENTH ADDITION	R	11,180.0	3,040.0	14,220.0	\$631.08	\$631.08	\$0.00
1379.026.00	CRARY DEVELOPMENT, INC	487 59TH AVE S	CRARY'S SEVENTH ADDITION	R	8,828.0	2,560.0	11,388.0	\$505.40	\$0.00	\$505.40
1379.027.00	CRARY DEVELOPMENT, INC	475 59TH AVE S	CRARY'S SEVENTH ADDITION	R	7,465.0	2,240.0	9,705.0	\$430.71	\$0.00	\$430.71
1379.028.00	CRARY DEVELOPMENT, INC	463 59TH AVE S	CRARY'S SEVENTH ADDITION	R	8,367.0	2,560.0	10,927.0	\$484.94	\$0.00	\$484.94
1379.029.00	CRARY DEVELOPMENT, INC	451 59TH AVE S	CRARY'S SEVENTH ADDITION	R	7,821.0	2,240.0	10,061.0	\$446.51	\$0.00	\$446.51
1379.030.00	CRARY DEVELOPMENT, INC	439 59TH AVE S	CRARY'S SEVENTH ADDITION	R	8,320.0	2,560.0	10,880.0	\$482.85	\$0.00	\$482.85
1379.031.00	CRARY DEVELOPMENT, INC	427 59TH AVE S	CRARY'S SEVENTH ADDITION	R	7,280.0	2,240.0	9,520.0	\$422.50	\$0.00	\$422.50
1379.032.00	CRARY DEVELOPMENT, INC	413 59TH AVE S	CRARY'S SEVENTH ADDITION	R	7,280.0	2,240.0	9,520.0	\$422.50	\$0.00	\$422.50
1379.033.00	CRARY DEVELOPMENT, INC	401 59TH AVE S	CRARY'S SEVENTH ADDITION	R	8,840.0	2,720.0	11,560.0	\$513.03	\$0.00	\$513.03
1379.034.00	CRARY DEVELOPMENT, INC	402 PLYMOUTH LANE	CRARY'S SEVENTH ADDITION	R	8,840.0	2,720.0	11,560.0	\$513.03	\$0.00	\$513.03
1379.035.00	CRARY DEVELOPMENT, INC	414 PLYMOUTH LANE	CRARY'S SEVENTH ADDITION	R	7,280.0	2,240.0	9,520.0	\$422.50	\$0.00	\$422.50
1379.036.00	CRARY DEVELOPMENT, INC	426 PLYMOUTH LANE	CRARY'S SEVENTH ADDITION	R	8,320.0	2,560.0	10,880.0	\$482.85	\$0.00	\$482.85
1379.037.00	CRARY DEVELOPMENT, INC	438 PLYMOUTH LANE	CRARY'S SEVENTH ADDITION	R	7,280.0	2,240.0	9,520.0	\$422.50	\$0.00	\$422.50
1379.038.00	CRARY DEVELOPMENT, INC	450 PLYMOUTH LANE	CRARY'S SEVENTH ADDITION	R	8,320.0	2,560.0	10,880.0	\$482.85	\$0.00	\$482.85
1379.039.00	CRARY DEVELOPMENT, INC	462 PLYMOUTH LANE	CRARY'S SEVENTH ADDITION	R	8,320.0	2,560.0	10,880.0	\$482.85	\$0.00	\$482.85
1379.040.00	CRARY DEVELOPMENT, INC	474 PLYMOUTH LANE	CRARY'S SEVENTH ADDITION	R	7,280.0	2,240.0	9,520.0	\$422.50	\$0.00	\$422.50
1379.041.00	CRARY DEVELOPMENT, INC	486 PLYMOUTH LANE	CRARY'S SEVENTH ADDITION	R	8,320.0	2,560.0	10,880.0	\$482.85	\$0.00	\$482.85
1379.042.00	CRARY DEVELOPMENT, INC	498 PLYMOUTH LANE	CRARY'S SEVENTH ADDITION	R	10,143.0	3,240.0	13,383.0	\$593.94	\$0.00	\$593.94
1379.043.00	CRARY DEVELOPMENT, INC	301 WREN DR	CRARY'S SEVENTH ADDITION	R	10,732.0	3,080.0	13,812.0	\$612.98	\$251.06	\$361.92
1379.044.00	CRARY DEVELOPMENT, INC	307 WREN DR	CRARY'S SEVENTH ADDITION	R	8,920.0	2,560.0	11,480.0	\$509.48	\$251.06	\$258.42
1379.045.00	CRARY DEVELOPMENT, INC	313 WREN DR	CRARY'S SEVENTH ADDITION	R	8,920.0	2,560.0	11,480.0	\$509.48	\$251.06	\$258.42
1379.046.00	CRARY DEVELOPMENT, INC	319 WREN DR	CRARY'S SEVENTH ADDITION	R	10,175.0	2,920.0	13,095.0	\$581.16	\$251.06	\$330.10
1379.047.00	CRARY DEVELOPMENT, INC	325 WREN DR	CRARY'S SEVENTH ADDITION	R	8,920.0	2,560.0	11,480.0	\$509.48	\$251.06	\$258.42
1379.048.00	CRARY DEVELOPMENT, INC	331 WREN DR	CRARY'S SEVENTH ADDITION	R	10,175.0	2,920.0	13,095.0	\$581.16	\$251.06	\$330.10
1379.049.00	CRARY DEVELOPMENT, INC	337 WREN DR	CRARY'S SEVENTH ADDITION	R	8,920.0	2,560.0	11,480.0	\$509.48	\$251.06	\$258.42
1379.050.00	CRARY DEVELOPMENT, INC	343 WREN DR	CRARY'S SEVENTH ADDITION	R	10,175.0	2,920.0	13,095.0	\$581.16	\$251.06	\$330.10
1379.051.00	CRARY DEVELOPMENT, INC	349 WREN DR	CRARY'S SEVENTH ADDITION	R	8,920.0	2,560.0	11,480.0	\$509.48	\$251.06	\$258.42
1379.052.00	CRARY DEVELOPMENT, INC	355 WREN DR	CRARY'S SEVENTH ADDITION	R	10,175.0	2,920.0	13,095.0	\$581.16	\$250.98	\$330.18
1379.053.00	CRARY DEVELOPMENT, INC	361 WREN DR	CRARY'S SEVENTH ADDITION	R	8,920.0	2,560.0	11,480.0	\$509.48	\$0.00	\$509.48
1379.054.00	CRARY DEVELOPMENT, INC	367 WREN DR	CRARY'S SEVENTH ADDITION	R	8,920.0	2,560.0	11,480.0	\$509.48	\$0.00	\$509.48

1379.055.00	CRARY DEVELOPMENT, INC	373 WREN DR	CRARY'S SEVENTH ADDITION	R	11,288.0	2,760.0	14,048.0	\$623.45	\$0.00
1379.056.00	CRARY DEVELOPMENT, INC	379 WREN DR	CRARY'S SEVENTH ADDITION	R	15,495.0	2,080.0	17,575.0	\$779.98	\$0.00
1379.057.00	CRARY DEVELOPMENT, INC	385 WREN DR	CRARY'S SEVENTH ADDITION	R	21,700.0	2,080.0	23,780.0	\$1,055.36	\$0.00
1379.058.00	CRARY DEVELOPMENT, INC	389 WREN DR	CRARY'S SEVENTH ADDITION	R	13,238.0	2,120.0	15,358.0	\$681.59	\$0.00
1379.059.00	CRARY DEVELOPMENT, INC	391 WREN DR	CRARY'S SEVENTH ADDITION	R	8,288.0	2,240.0	10,528.0	\$467.23	\$0.00
1379.060.00	CRARY DEVELOPMENT, INC	393 WREN DR	CRARY'S SEVENTH ADDITION	R	9,472.0	2,560.0	12,032.0	\$533.98	\$0.00
1379.061.00	CRARY DEVELOPMENT, INC	395 WREN DR	CRARY'S SEVENTH ADDITION	R	8,288.0	2,240.0	10,528.0	\$467.23	\$0.00
1379.062.00	CRARY DEVELOPMENT, INC	397 WREN DR	CRARY'S SEVENTH ADDITION	R	9,472.0	2,560.0	12,032.0	\$533.98	\$0.00
1379.063.00	CRARY DEVELOPMENT, INC	399 WREN DR	CRARY'S SEVENTH ADDITION	R	8,288.0	2,240.0	10,528.0	\$467.23	\$0.00
1379.064.00	CRARY DEVELOPMENT, INC	401 WREN DR	CRARY'S SEVENTH ADDITION	R	9,472.0	2,560.0	12,032.0	\$533.98	\$0.00
1379.065.00	CRARY DEVELOPMENT, INC	403 WREN DR	CRARY'S SEVENTH ADDITION	R	8,288.0	2,240.0	10,528.0	\$467.23	\$0.00
1379.066.00	CRARY DEVELOPMENT, INC	405 WREN DR	CRARY'S SEVENTH ADDITION	R	9,472.0	2,560.0	12,032.0	\$533.98	\$0.00
1379.067.00	CRARY DEVELOPMENT, INC	407 WREN DR	CRARY'S SEVENTH ADDITION	R	8,288.0	2,240.0	10,528.0	\$467.23	\$0.00
1379.068.00	CRARY DEVELOPMENT, INC	409 WREN DR	CRARY'S SEVENTH ADDITION	R	10,099.0	2,560.0	12,659.0	\$561.81	\$0.00
1379.069.00	CRARY DEVELOPMENT, INC	413 WREN DR	CRARY'S SEVENTH ADDITION	R	14,970.0	2,080.0	17,050.0	\$756.68	\$0.00
1379.070.00	CRARY DEVELOPMENT, INC	419 WREN DR	CRARY'S SEVENTH ADDITION	R	20,880.0	2,080.0	22,960.0	\$1,018.96	\$0.00
1379.071.00	CRARY DEVELOPMENT, INC	425 WREN DR	CRARY'S SEVENTH ADDITION	R	12,450.0	2,000.0	14,450.0	\$641.29	\$0.00
1379.072.00	CRARY DEVELOPMENT, INC	431 WREN DR	CRARY'S SEVENTH ADDITION	R	8,840.0	2,720.0	11,560.0	\$513.03	\$0.00
1379.073.00	CRARY DEVELOPMENT, INC	6103 COTTONWOOD ST	CRARY'S SEVENTH ADDITION	R	8,840.0	2,720.0	11,560.0	\$513.03	\$0.00
1379.074.00	CRARY DEVELOPMENT, INC	6121 COTTONWOOD ST	CRARY'S SEVENTH ADDITION	R	7,540.0	2,320.0	9,860.0	\$437.59	\$0.00
1379.075.00	CRARY DEVELOPMENT, INC	6139 COTTONWOOD ST	CRARY'S SEVENTH ADDITION	R	8,320.0	2,560.0	10,880.0	\$482.85	\$0.00
1379.076.00	CRARY DEVELOPMENT, INC	6157 COTTONWOOD ST	CRARY'S SEVENTH ADDITION	R	7,540.0	2,320.0	9,860.0	\$437.59	\$0.00
1379.077.00	CRARY DEVELOPMENT, INC	6175 COTTONWOOD ST	CRARY'S SEVENTH ADDITION	R	8,510.0	2,600.0	11,110.0	\$493.06	\$0.00
1379.078.00	CRARY DEVELOPMENT, INC	499 PLYMOUTH LANE	CRARY'S SEVENTH ADDITION	R	12,111.0	3,080.0	15,191.0	\$674.18	\$0.00
1379.079.00	CRARY DEVELOPMENT, INC	487 PLYMOUTH LANE	CRARY'S SEVENTH ADDITION	R	8,320.0	2,560.0	10,880.0	\$482.85	\$0.00
1379.080.00	CRARY DEVELOPMENT, INC	475 PLYMOUTH LANE	CRARY'S SEVENTH ADDITION	R	7,280.0	2,240.0	9,520.0	\$422.50	\$0.00
1379.081.00	CRARY DEVELOPMENT, INC	463 PLYMOUTH LANE	CRARY'S SEVENTH ADDITION	R	8,320.0	2,560.0	10,880.0	\$482.85	\$0.00
1379.082.00	CRARY DEVELOPMENT, INC	451 PLYMOUTH LANE	CRARY'S SEVENTH ADDITION	R	8,320.0	2,560.0	10,880.0	\$482.85	\$0.00
1379.083.00	CRARY DEVELOPMENT, INC	439 PLYMOUTH LANE	CRARY'S SEVENTH ADDITION	R	8,320.0	2,560.0	10,880.0	\$482.85	\$0.00
1379.084.00	CRARY DEVELOPMENT, INC	427 PLYMOUTH LANE	CRARY'S SEVENTH ADDITION	R	8,320.0	2,560.0	10,880.0	\$482.85	\$0.00
1379.085.00	CRARY DEVELOPMENT, INC	415 PLYMOUTH LANE	CRARY'S SEVENTH ADDITION	R	7,280.0	2,240.0	9,520.0	\$422.50	\$0.00
1379.086.00	CRARY DEVELOPMENT, INC	403 PLYMOUTH LANE	CRARY'S SEVENTH ADDITION	R	8,840.0	2,720.0	11,560.0	\$513.03	\$0.00
1379.087.00	CRARY DEVELOPMENT, INC	340 WREN DR	CRARY'S SEVENTH ADDITION	R	7,280.0	2,240.0	9,520.0	\$422.50	\$0.00
1379.088.00	CRARY DEVELOPMENT, INC	346 WREN DR	CRARY'S SEVENTH ADDITION	R	7,280.0	2,240.0	9,520.0	\$422.50	\$0.00
1379.089.00	CRARY DEVELOPMENT, INC	352 WREN DR	CRARY'S SEVENTH ADDITION	R	8,320.0	2,560.0	10,880.0	\$482.85	\$0.00
1379.090.00	CRARY DEVELOPMENT, INC	358 WREN DR	CRARY'S SEVENTH ADDITION	R	7,280.0	2,240.0	9,520.0	\$422.50	\$0.00
1379.091.00	CRARY DEVELOPMENT, INC	362 WREN DR	CRARY'S SEVENTH ADDITION	R	8,320.0	2,560.0	10,880.0	\$482.85	\$0.00
1379.092.00	CRARY DEVELOPMENT, INC	366 WREN DR	CRARY'S SEVENTH ADDITION	R	7,280.0	2,240.0	9,520.0	\$422.50	\$0.00
1379.093.00	CRARY DEVELOPMENT, INC	372 WREN DR	CRARY'S SEVENTH ADDITION	R	9,055.0	2,840.0	11,895.0	\$527.90	\$0.00
1379.094.00	CRARY DEVELOPMENT, INC	380 HUMMEL CT	CRARY'S SEVENTH ADDITION	R	10,963.0	2,800.0	13,763.0	\$610.80	\$0.00
1379.095.00	CRARY DEVELOPMENT, INC	384 HUMMEL CT	CRARY'S SEVENTH ADDITION	R	8,760.0	2,240.0	11,000.0	\$488.18	\$0.00
1379.096.00	CRARY DEVELOPMENT, INC	388 HUMMEL CT	CRARY'S SEVENTH ADDITION	R	9,911.0	2,560.0	12,471.0	\$553.46	\$0.00
1379.097.00	CRARY DEVELOPMENT, INC	392 HUMMEL CT	CRARY'S SEVENTH ADDITION	R	12,068.0	2,560.0	14,628.0	\$649.19	\$0.00
1379.098.00	CRARY DEVELOPMENT, INC	396 HUMMEL CT	CRARY'S SEVENTH ADDITION	R	20,603.0	2,080.0	22,683.0	\$1,006.67	\$0.00
1379.099.00	CRARY DEVELOPMENT, INC	400 HUMMEL CT	CRARY'S SEVENTH ADDITION	R	15,346.0	2,560.0	17,906.0	\$794.67	\$0.00
1379.100.00	CRARY DEVELOPMENT, INC	404 HUMMEL CT	CRARY'S SEVENTH ADDITION	R	17,512.0	2,080.0	19,592.0	\$869.49	\$0.00
1379.101.00	CRARY DEVELOPMENT, INC	410 HUMMEL CT	CRARY'S SEVENTH ADDITION	R	11,292.0	2,200.0	13,492.0	\$598.77	\$0.00
1379.102.00	CRARY DEVELOPMENT, INC	414 HUMMEL CT	CRARY'S SEVENTH ADDITION	R	9,903.0	2,600.0	12,503.0	\$554.88	\$0.00
1379.103.00	CRARY DEVELOPMENT, INC	418 HUMMEL CT	CRARY'S SEVENTH ADDITION	R	8,761.0	2,240.0	11,001.0	\$488.22	\$0.00
1379.104.00	CRARY DEVELOPMENT, INC	422 HUMMEL CT	CRARY'S SEVENTH ADDITION	R	10,804.0	2,760.0	13,564.0	\$601.97	\$0.00
1379.105.00	CRARY DEVELOPMENT, INC	430 WREN DR	CRARY'S SEVENTH ADDITION	R	8,765.0	2,720.0	11,485.0	\$509.70	\$0.00
1379.106.00	CRARY DEVELOPMENT, INC	436 WREN DR	CRARY'S SEVENTH ADDITION	R	7,280.0	2,240.0	9,520.0	\$422.50	\$0.00
1379.107.00	CRARY DEVELOPMENT, INC	442 WREN DR	CRARY'S SEVENTH ADDITION	R	8,320.0	2,560.0	10,880.0	\$482.85	\$0.00
1379.108.00	CRARY DEVELOPMENT, INC	454 WREN DR	CRARY'S SEVENTH ADDITION	R	7,280.0	2,240.0	9,520.0	\$422.50	\$0.00
1379.109.00	CRARY DEVELOPMENT, INC	460 WREN DR	CRARY'S SEVENTH ADDITION	R	8,375.0	2,560.0	10,935.0	\$485.30	\$0.00
1379.110.00	CRARY DEVELOPMENT, INC	464 WREN DR	CRARY'S SEVENTH ADDITION	R	7,707.0	2,360.0	10,067.0	\$446.77	\$0.00
1379.111.00	CRARY DEVELOPMENT, INC	468 WREN DR	CRARY'S SEVENTH ADDITION	R	7,735.0	2,240.0	9,975.0	\$442.69	\$0.00
1380.001.00	CRARY DEVELOPMENT, INC	476 CROMWELL DR	CRARY'S EIGHTH RESUBDIVISION	R	9,634.0	2,760.0	12,394.0	\$550.05	\$0.00
1380.002.00	CRARY DEVELOPMENT, INC	468 CROMWELL DR	CRARY'S EIGHTH RESUBDIVISION	R	9,059.0	2,560.0	11,619.0	\$515.65	\$0.00
1380.003.00	CRARY DEVELOPMENT, INC	460 CROMWELL DR	CRARY'S EIGHTH RESUBDIVISION	R	9,059.0	2,560.0	11,619.0	\$515.65	\$0.00
1380.004.00	CRARY DEVELOPMENT, INC	452 CROMWELL DR	CRARY'S EIGHTH RESUBDIVISION	R	9,059.0	2,560.0	11,619.0	\$515.65	\$0.00

1380.005.00	CRARY DEVELOPMENT, INC	444 CROMWELL DR	CRARY'S EIGHTH RESUBDIVISION	R	8,992.0	2,560.0	11,552.0	\$512.68	\$0.00	\$512.68
1380.006.00	CRARY DEVELOPMENT, INC	438 CROMWELL DR	CRARY'S EIGHTH RESUBDIVISION	R	11,936.0	2,120.0	14,056.0	\$623.81	\$0.00	\$623.81
1380.007.00	CRARY DEVELOPMENT, INC	430 CROMWELL DR	CRARY'S EIGHTH RESUBDIVISION	R	17,933.0	2,120.0	20,053.0	\$889.95	\$0.00	\$889.95
1380.008.00	CRARY DEVELOPMENT, INC	420 CROMWELL DR	CRARY'S EIGHTH RESUBDIVISION	R	13,457.0	2,120.0	15,577.0	\$691.31	\$0.00	\$691.31
1380.009.00	CRARY DEVELOPMENT, INC	408 CROMWELL DR	CRARY'S EIGHTH RESUBDIVISION	R	9,081.0	2,520.0	11,601.0	\$514.85	\$0.00	\$514.85
1380.010.00	CRARY DEVELOPMENT, INC	398 CROMWELL DR	CRARY'S EIGHTH RESUBDIVISION	R	8,606.0	2,560.0	11,166.0	\$495.55	\$0.00	\$495.55
1380.011.00	CRARY DEVELOPMENT, INC	390 CROMWELL DR	CRARY'S EIGHTH RESUBDIVISION	R	8,606.0	2,560.0	11,166.0	\$495.55	\$0.00	\$495.55
1380.012.00	CRARY DEVELOPMENT, INC	380 CROMWELL DR	CRARY'S EIGHTH RESUBDIVISION	R	11,797.0	2,440.0	14,237.0	\$523.55	\$0.00	\$523.55
1380.013.00	CRARY DEVELOPMENT, INC	368 CROMWELL DR	CRARY'S EIGHTH RESUBDIVISION	R	14,177.0	2,120.0	16,297.0	\$723.26	\$0.00	\$723.26
1380.014.00	CRARY DEVELOPMENT, INC	352 CROMWELL DR	CRARY'S EIGHTH RESUBDIVISION	R	19,937.0	2,120.0	22,057.0	\$978.89	\$229.61	\$749.28
1380.015.00	CRARY DEVELOPMENT, INC	344 CROMWELL DR	CRARY'S EIGHTH RESUBDIVISION	R	12,044.0	2,160.0	14,204.0	\$630.37	\$229.61	\$400.76
1380.016.00	CRARY DEVELOPMENT, INC	336 CROMWELL DR	CRARY'S EIGHTH RESUBDIVISION	R	8,667.0	2,560.0	11,227.0	\$498.25	\$229.61	\$268.64
1380.017.00	CRARY DEVELOPMENT, INC	328 CROMWELL DR	CRARY'S EIGHTH RESUBDIVISION	R	8,667.0	2,560.0	11,227.0	\$498.25	\$229.61	\$268.64
1380.018.00	CRARY DEVELOPMENT, INC	320 CROMWELL DR	CRARY'S EIGHTH RESUBDIVISION	R	8,667.0	2,560.0	11,227.0	\$498.25	\$229.61	\$268.64
1380.019.00	CRARY DEVELOPMENT, INC	312 CROMWELL DR	CRARY'S EIGHTH RESUBDIVISION	R	8,667.0	2,560.0	11,227.0	\$498.25	\$229.61	\$268.64
1380.020.00	CRARY DEVELOPMENT, INC	304 CROMWELL DR	CRARY'S EIGHTH RESUBDIVISION	R	9,159.0	2,720.0	11,879.0	\$527.19	\$229.61	\$297.58
1380.021.00	CRARY DEVELOPMENT, INC	477 CROMWELL DR	CRARY'S EIGHTH RESUBDIVISION	R	9,100.0	2,600.0	11,700.0	\$519.25	\$0.00	\$519.25
1380.022.00	CRARY DEVELOPMENT, INC	471 CROMWELL DR	CRARY'S EIGHTH RESUBDIVISION	R	7,980.0	2,280.0	10,260.0	\$455.34	\$0.00	\$455.34
1380.023.00	CRARY DEVELOPMENT, INC	465 CROMWELL DR	CRARY'S EIGHTH RESUBDIVISION	R	7,980.0	2,280.0	10,260.0	\$455.34	\$0.00	\$455.34
1380.024.00	CRARY DEVELOPMENT, INC	457 CROMWELL DR	CRARY'S EIGHTH RESUBDIVISION	R	7,980.0	2,280.0	10,260.0	\$455.34	\$0.00	\$455.34
1380.025.00	CRARY DEVELOPMENT, INC	449 CROMWELL DR	CRARY'S EIGHTH RESUBDIVISION	R	7,980.0	2,280.0	10,260.0	\$455.34	\$0.00	\$455.34
1380.026.00	CRARY DEVELOPMENT, INC	441 CROMWELL DR	CRARY'S EIGHTH RESUBDIVISION	R	8,981.0	2,600.0	11,581.0	\$513.96	\$0.00	\$513.96
1380.027.00	CRARY DEVELOPMENT, INC	341 CROMWELL DR	CRARY'S EIGHTH RESUBDIVISION	R	8,982.0	2,600.0	11,582.0	\$514.01	\$0.00	\$514.01
1380.028.00	CRARY DEVELOPMENT, INC	333 CROMWELL DR	CRARY'S EIGHTH RESUBDIVISION	R	7,980.0	2,280.0	10,260.0	\$455.34	\$0.00	\$455.34
1380.029.00	CRARY DEVELOPMENT, INC	325 CROMWELL DR	CRARY'S EIGHTH RESUBDIVISION	R	7,980.0	2,280.0	10,260.0	\$455.34	\$0.00	\$455.34
1380.030.00	CRARY DEVELOPMENT, INC	317 CROMWELL DR	CRARY'S EIGHTH RESUBDIVISION	R	7,980.0	2,280.0	10,260.0	\$455.34	\$0.00	\$455.34
1380.031.00	CRARY DEVELOPMENT, INC	309 CROMWELL DR	CRARY'S EIGHTH RESUBDIVISION	R	7,980.0	2,280.0	10,260.0	\$455.34	\$0.00	\$455.34
1380.032.00	CRARY DEVELOPMENT, INC	301 CROMWELL DR	CRARY'S EIGHTH RESUBDIVISION	R	9,100.0	2,600.0	11,700.0	\$519.25	\$0.00	\$519.25
1382.001.00	CRARY DEVELOPMENT, INC	5872 LOU ANN ST	CRARY'S NINTH ADDITION	R	7,103.0	1,920.0	9,023.0	\$400.44	\$0.00	\$400.44
1382.002.00	CRARY DEVELOPMENT, INC	5878 LOU ANN ST	CRARY'S NINTH ADDITION	R	7,098.0	2,120.0	9,218.0	\$409.09	\$0.00	\$409.09
1382.003.00	CRARY DEVELOPMENT, INC	5880 LOU ANN ST	CRARY'S NINTH ADDITION	R	4,943.0	1,520.0	6,463.0	\$286.83	\$0.00	\$286.83
1382.004.00	CRARY DEVELOPMENT, INC	5884 LOU ANN ST	CRARY'S NINTH ADDITION	R	6,890.0	2,120.0	9,010.0	\$399.86	\$0.00	\$399.86
1382.005.00	CRARY DEVELOPMENT, INC	5890 LOU ANN ST	CRARY'S NINTH ADDITION	R	6,240.0	1,920.0	8,160.0	\$362.14	\$0.00	\$362.14
1382.006.00	CRARY DEVELOPMENT, INC	5898 LOU ANN ST	CRARY'S NINTH ADDITION	R	6,240.0	1,920.0	8,160.0	\$362.14	\$0.00	\$362.14
1382.007.00	CRARY DEVELOPMENT, INC	5904 LOU ANN ST	CRARY'S NINTH ADDITION	R	6,240.0	1,920.0	8,160.0	\$362.14	\$0.00	\$362.14
1382.008.00	CRARY DEVELOPMENT, INC	5912 LOU ANN ST	CRARY'S NINTH ADDITION	R	4,940.0	1,520.0	6,460.0	\$286.69	\$0.00	\$286.69
1382.009.00	CRARY DEVELOPMENT, INC	5920 LOU ANN ST	CRARY'S NINTH ADDITION	R	8,580.0	2,640.0	11,220.0	\$497.94	\$0.00	\$497.94
1382.010.00	CRARY DEVELOPMENT, INC	5928 LOU ANN ST	CRARY'S NINTH ADDITION	R	6,460.0	1,520.0	7,980.0	\$286.69	\$0.00	\$286.69
1382.011.00	CRARY DEVELOPMENT, INC	5936 LOU ANN ST	CRARY'S NINTH ADDITION	R	6,240.0	1,920.0	8,160.0	\$362.14	\$0.00	\$362.14
1382.012.00	CRARY DEVELOPMENT, INC	5944 LOU ANN ST	CRARY'S NINTH ADDITION	R	4,940.0	1,520.0	6,460.0	\$286.69	\$0.00	\$286.69
1382.013.00	CRARY DEVELOPMENT, INC	5952 LOU ANN ST	CRARY'S NINTH ADDITION	R	6,890.0	2,120.0	9,010.0	\$399.86	\$0.00	\$399.86
1382.014.00	CRARY DEVELOPMENT, INC	5960 LOU ANN ST	CRARY'S NINTH ADDITION	R	4,940.0	1,520.0	6,460.0	\$286.69	\$0.00	\$286.69
1382.015.00	CRARY DEVELOPMENT, INC	5968 LOU ANN ST	CRARY'S NINTH ADDITION	R	6,240.0	1,920.0	8,160.0	\$362.14	\$0.00	\$362.14
1382.016.00	CRARY DEVELOPMENT, INC	5976 LOU ANN ST	CRARY'S NINTH ADDITION	R	4,940.0	1,520.0	6,460.0	\$286.69	\$0.00	\$286.69
1382.017.00	CRARY DEVELOPMENT, INC	5988 LOU ANN ST	CRARY'S NINTH ADDITION	R	9,820.0	3,000.0	12,820.0	\$568.95	\$0.00	\$568.95
1382.018.00	CRARY DEVELOPMENT, INC	5851 LOU ANN ST	CRARY'S NINTH ADDITION	R	8,091.0	2,120.0	10,211.0	\$453.16	\$0.00	\$453.16
1382.019.00	CRARY DEVELOPMENT, INC	5865 LOU ANN ST	CRARY'S NINTH ADDITION	R	9,860.0	3,800.0	13,660.0	\$606.23	\$0.00	\$606.23
1382.020.00	CRARY DEVELOPMENT, INC	5873 LOU ANN ST	CRARY'S NINTH ADDITION	R	10,418.0	4,720.0	15,138.0	\$671.82	\$0.00	\$671.82
1382.021.00	CRARY DEVELOPMENT, INC	5887 LOU ANN ST	CRARY'S NINTH ADDITION	R	8,580.0	2,640.0	11,220.0	\$497.94	\$0.00	\$497.94
1382.022.00	CRARY DEVELOPMENT, INC	5891 LOU ANN ST	CRARY'S NINTH ADDITION	R	6,240.0	1,920.0	8,160.0	\$362.14	\$0.00	\$362.14
1382.023.00	CRARY DEVELOPMENT, INC	5899 LOU ANN ST	CRARY'S NINTH ADDITION	R	4,940.0	1,520.0	6,460.0	\$286.69	\$0.00	\$286.69
1382.024.00	CRARY DEVELOPMENT, INC	5905 LOU ANN ST	CRARY'S NINTH ADDITION	R	6,240.0	1,920.0	8,160.0	\$362.14	\$0.00	\$362.14
1382.025.00	CRARY DEVELOPMENT, INC	5913 LOU ANN ST	CRARY'S NINTH ADDITION	R	4,940.0	1,520.0	6,460.0	\$286.69	\$0.00	\$286.69
1382.026.00	CRARY DEVELOPMENT, INC	5921 LOU ANN ST	CRARY'S NINTH ADDITION	R	8,580.0	2,640.0	11,220.0	\$497.94	\$0.00	\$497.94
1382.027.00	CRARY DEVELOPMENT, INC	5929 LOU ANN ST	CRARY'S NINTH ADDITION	R	4,940.0	1,520.0	6,460.0	\$286.69	\$0.00	\$286.69
1382.028.00	CRARY DEVELOPMENT, INC	5937 LOU ANN ST	CRARY'S NINTH ADDITION	R	6,240.0	1,920.0	8,160.0	\$362.14	\$0.00	\$362.14
1382.029.00	CRARY DEVELOPMENT, INC	5945 LOU ANN ST	CRARY'S NINTH ADDITION	R	4,940.0	1,520.0	6,460.0	\$286.69	\$0.00	\$286.69
1382.030.00	CRARY DEVELOPMENT, INC	5953 LOU ANN ST	CRARY'S NINTH ADDITION	R	6,890.0	2,120.0	9,010.0	\$399.86	\$0.00	\$399.86
1382.031.00	CRARY DEVELOPMENT, INC	5961 LOU ANN ST	CRARY'S NINTH ADDITION	R	4,940.0	1,520.0	6,460.0	\$286.69	\$0.00	\$286.69
1382.032.00	CRARY DEVELOPMENT, INC	5969 LOU ANN ST	CRARY'S NINTH ADDITION	R	6,240.0	1,920.0	8,160.0	\$362.14	\$0.00	\$362.14
1382.033.00	CRARY DEVELOPMENT, INC	5977 LOU ANN ST	CRARY'S NINTH ADDITION	R	4,940.0	1,520.0	6,460.0	\$286.69	\$0.00	\$286.69

1382.034.00	CRARY DEVELOPMENT, INC	5985 LOU ANN ST	R	4,940.0	1,520.0	6,460.0	\$286.69	\$0.00	\$286.69
1382.035.00	CRARY DEVELOPMENT, INC	5983 LOU ANN ST	R	10,883.0	3,280.0	14,163.0	\$628.55	\$0.00	\$628.55
3117.273.11	CRARY DEVELOPMENT, INC	NO ADDRESS-UNPLATTED	A	47,034.0	-	47,034.0	\$2,087.37	\$0.00	\$2,087.37
3117.273.12	CRARY DEVELOPMENT, INC	NO ADDRESS-UNPLATTED	A	69,840.0	-	69,840.0	\$3,099.50	\$0.00	\$3,099.50
3117.273.13	CRARY DEVELOPMENT, INC	NO ADDRESS-UNPLATTED	A	58,185.0	-	58,185.0	\$2,682.25	\$0.00	\$2,682.25
3117.273.15	CRARY DEVELOPMENT, INC	NO ADDRESS-UNPLATTED	A	228,925.0	-	228,925.0	\$10,159.69	\$0.00	\$10,159.69
3117.273.16	CRARY DEVELOPMENT, INC	NO ADDRESS-UNPLATTED	A	71,925.0	-	71,925.0	\$3,192.03	\$0.00	\$3,192.03
				2,061,164.00	428,160.0	2,489,324.0	\$110,476.05	\$9,712.14	\$100,763.91

TOTAL \$100,763.91

FUTURE AREA ASSESSMENTS	DOLLAR AMOUNT	SQUARE FOOTAGE
TOTAL ASSESSED	\$167,803.78	3,781,080
LESS DISTRICT #508.1 SHARE	\$110,476.05	2,489,324
REMAINING FUTURE SHARE	\$57,327.73	1,291,756