

SHEET MATERIAL ID LIST

MATERIAL ID	SPEC SECTION & DESCRIPTION
CMU-1	04 2000 - NORMAL WEIGHT CMU
MTL PNL-60	07 4213.23 - METAL COMPOSITE MATERIAL WALL PANEL
MTL PNL-61	07 4213.25 - METAL COMPOSITE MATERIAL WALL PANEL
PC FIN-80	03 4500 - SANDBLAST FINISH
SMF-2	07 6200 - PREFINISHED ALUMINUM FLASHING



124 North Third Street
Grand Forks, ND 58003
phone 701.746.1327
facsimile 701.746.1702
www.jlgarchitects.com
copyright © 2018

BUILDING ELEVATIONS KEYNOTE

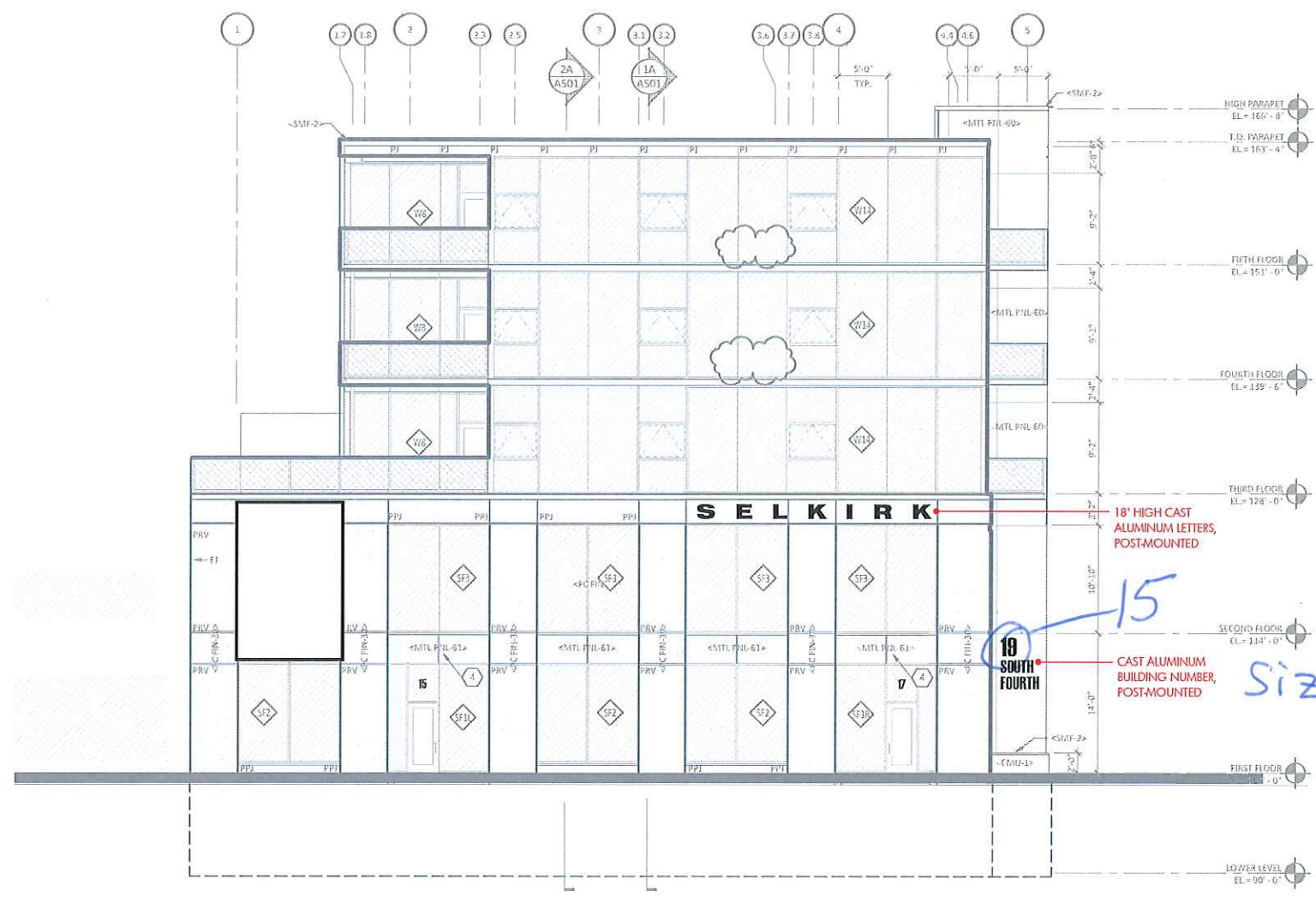
KEYNOTE	DESCRIPTION
2	POWER FOR HYDRANT ACCESS BY ELECTRICAL CONTRACTOR, COORDINATE WITH GC AND ARCHITECT
1	POWER FOR FUTURE SIGNAGE BY ELECTRICAL CONTRACTOR
5	LIGHTING FIXTURE; ELECTRICAL CONTRACTOR TO COORDINATE LOCATION WITH ARCHITECT

EXT. ELEVATION GENERAL NOTES

- A. REFER TO GLAZING ELEVATIONS FOR STOREFRONT AND CURTAINWALL ELEVATIONS
- B. [Symbol] DESIGNATES GLASS RAILING SYSTEM
- C. [Symbol] DESIGNATES METAL PANEL JOINT
- D. [Symbol] DESIGNATES PRECAST PANEL JOINT
- E. [Symbol] DESIGNATES PRECAST REVEAL
- F. [Symbol] DESIGNATES EXPANSION JOINT

REVISION SCHEDULE

NO.	DESCRIPTION	DATE
1	BP-3, ADD #1	7/27/18
2	BP-3, ASI-3	9/17/18



5A SOUTH ELEVATION
SCALE: 1/8" = 1'-0"

DAKOTA COMMERCIAL
4TH STREET LOFTS
 19 S. 4TH ST., GRAND FORKS, ND

DATE
September 17, 2018

PHASE
BID PACKAGE #4

PROJECT
JLG 16097

SHEET
A301

EXTERIOR ELEVATIONS

9/16/2018 12:54:56 AM